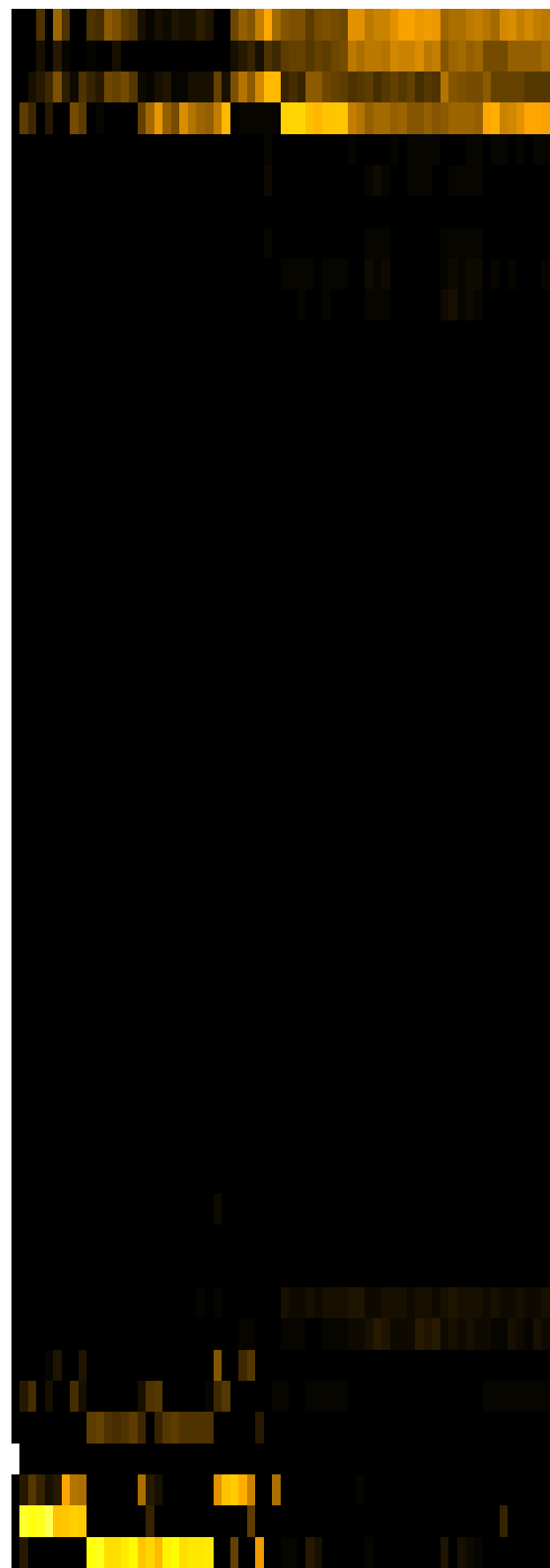
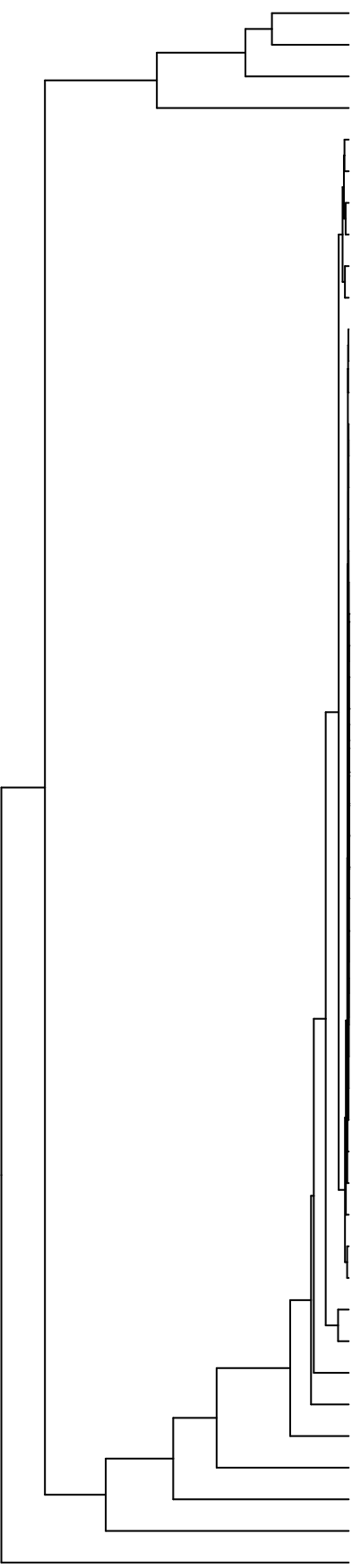


Group006
 D Final -PMA
 C Final -PMA



- Veillonella
- Haemophilus
- Neisseria
- Streptococcus
- Schaalia
- Campylobacter
- Gemella
- Porphyromonas
- Eikenella
- Aggregatibacter
- Solobacterium
- Lancefieldella
- Actinomyces
- Catonella
- Oribacterium
- Lachnoanaerobaculum
- Stomatobaculum
- Saccharibacteria_(TM7)_[G-6]
- Riemerella
- Phyllobacterium
- Mycolicibacterium
- Acidovorax
- Novosphingobium
- Lachnospiraceae_[G-2]
- Leifsonia
- Agrobacterium
- Sphingobium
- Microbacterium
- Siccacidurans
- Delftia
- Acinetobacter
- Capnocytophaga
- Cutibacterium
- Absconditabacteria_(SR1)_[G-1]
- Lautropia
- Saccharibacteria_(TM7)_[G-1]
- Alloprevotella
- Serratia
- Staphylococcus
- Leptotrichia
- Prevotella
- Granulicatella
- Fusobacterium
- Raoultella
- Rothia
- Salmonella
- Pseudomonas
- Klebsiella
- Enterobacter
- Citrobacter

- F28914.S583
- F28914.S571
- F28914.S569
- F28914.S580
- F28914.S570
- F28914.S418
- F28914.S421
- F28914.S419
- F28914.S574
- F28914.S412
- F28914.S415
- F28914.S414
- F28914.S576
- F28914.S582
- F28914.S577
- F28914.S423
- F28914.S095
- F28914.S094
- F28914.S089
- F28914.S093
- F28914.S264
- F28914.S102
- F28914.S103
- F28914.S261
- F28914.S258
- F28914.S259
- F28914.S098
- F28914.S100
- F28914.S256
- F28914.S249
- F28914.S250
- F28914.S255

Genus

Samples